

Technical Data



| | |
|---------------------------|----------------------------|
| Engine | SL 755 |
| Make | DEUTZ |
| Type | BF4L 2011 |
| Performance | 50 kW (68hp) at 2,300 rpm. |
| Cylinders / stroke volume | 4 in line/ 3.108 ltrs. |
| Cooling system | oil / air |
| Engine | SL 655 |
| Type | F4L 2011 |
| Performance | 42kW (58hp) at 2,300 rpm. |
| Cylinders / stroke volume | 4 in line/ 3.108 ltrs. |
| Cooling system | oil / air |

Waste gas values acc. to 97/68/EC; stage II.
Dry air filter with safety cartridge and pollution indicator.



Drive Unit

power-controlled hydrostatic drive unit with maximum-load control, i.e. automatic adaptation of traction power and speed; creep speed gearshift via rotary potentiometer steadily adjustable 0 - 20 km/h travelling speed can be reduced at full engine revolutions; via an inch/brake pedal, giving at the same time more power to the working hydraulics
operating ranges shiftable under load

Front axle: planetary rigid axle with multiple-disc self-locking differential, rigid mounted

Rear axle: planetary rigid axle with reduction gear, swingingly suspended with multiple-disc self-locking differential and multiple-disc brake, rear axle oscillation +/- 12°.

Working operation 0 - 7 km/h
max. traction power / limited speed

Road operation 0 - 20 km/h
max. traction power / limited speed

Option 0 - 25 km/h high-speed version
as another option 38 km/h



Brakes

Service Brake
hydraulic foot-operated brake actuating two oil-immersed multiple-disc brakes effective on all 4 wheels via the all-wheel drive hydrostatic drive unit acting as wear-resistant auxiliary service brake

Parking Brake
mechanical operation of multiple-disc brake



Tires

Front and rear 405/70 R 20 MPT 01
Option 405/70 R 20 EM 01
Special tires on request.



Steering

Articulated steering, fully hydraulic via priority valve, quick and easy steering even at idling speed.
Total steering angle 80°.
In case of non-running engine, emergency steering characteristics of the wheel loader are provided.



Loading System

Hydraulic quick-change device as standard.
Sealed bearings with prolonged lubrication intervals.
Parallel kinematics with optimum parallel guidance.
Swivelling device 180° (2 x 90°) steadily swivelling.



Filling Capacities

Diesel fuel 80 l
Hydraulic system 65 l



Hydraulic System

Working / Steering hydraulic, pump discharge max. 60 l/min.
Working pressure, loading / steering hydraulics 200 bar/ 180 bar
Lifting, tipping and swivelling cylinder double acting.
Control unit with electro-hydraulic anticipatory control proportionally load-independent.
Control block with 4 operating circuits.
Single-lever cross-type control for lifting and tipping and swivelling cylinders and additional control circuit for quick-change device and attachments; it is possible to switch on floating position.



Dimensions and Weights

SL 755: acc. to drawing SL 655: acc. to drawing
Operating weight 6,250 kg Operating weight 5,950 kg



Electrical Equipment

Generator, three-phase current 14 V/ 60 A
Starter 2.2 kW/ 12 V
Battery 12 V/ 88 Ah
Battery voltage 12 V
Lighting acc. to StVZO (German Motor Vehicle Construction and Use Regulations) with halogen headlights.



Noise Emission Level

Guaranteed noise level: acc. to directive 2000/14/EC

Cabin

Standard Equipment

large, elastically supported cabin (ROPS-FOPS) granting all-round view, with plane entrance on both sides; parallel windshield wiper in front and rear with "parking position" and windshield washer, interval mechanism for wiper in front; tinted safety glazing, rounded panoramic front and rear window, sliding window on the right;
fully adjustable, ergonomic comfortable driver's seat with disc support, safety belt; steering wheel and instruments console adjustable as to inclination and height; adjustable engine oil heating with defrosting nozzles for front and rear window, 3-stage ventilator for fresh air and warm air; service hour meter, fuel indicator and all other necessary operating, controlling and indicating instruments clearly arranged on the instrument board; 12 V plug socket;
commutator switch, switch for additional control circuit, pushbutton for extending and retracting and pushbutton for parallel guidance cylinders integrated in the joystick, swivelling device 180° sensitively controlled via joystick, joystick moving together with the seat; 1-key system, interior lamp, sun shield, inside mirror, battery main switch; folding outside mirror on both sides, 2 working headlights in front of the cabin

Special Equipment

Options:

heated outside mirrors electrically adjustable;
working headlight in the back of the cabin;
panoramic lamp; acoustic reversing signal;
radio, air conditioning plant, anti-theft device;
comfortable driver's seat with pneumatic cushioning;
central lubrication system, pre-filter for coarse-grained dust, safety device against pipe breakage;
pressureless return pipe in front, additional control circuit for attachments;
shock absorption system for loading system;
first filling with biological oil, protective paint against aggressive agents;
soot filter system, spare wheel, catalyzer; universal shovel, lifting fork, load hook, power sweeper, snowplow, etc.

Other options on request

Difficult is easy:



PAUS
...the people who care!

Hermann Paus Maschinenfabrik GmbH
Siemensstraße 1-9 · 48488 Emsbüren
Telefon: (0 59 03) 7 07 - 0
Telefax: (0 59 03) 7 07 - 33
info@paus.de
www.paus.de

your distributor:



PAUS
...the people who care!

SL 655 + SL 755



Swivel Loader
SL 655 + SL 755

**At home on narrow
construction sites.**



Swivelling device with two directly actuated cylinders, for long-term smooth working at highest degree of operating safety



Extremely good accessibility for inspection and maintenance works due to the GFK engine cover that can be opened widely



Plain entrance on both sides, control device foldable to the back, ergonomically designed joystick, orthopaedic comfortable seat with safety belt and disc support



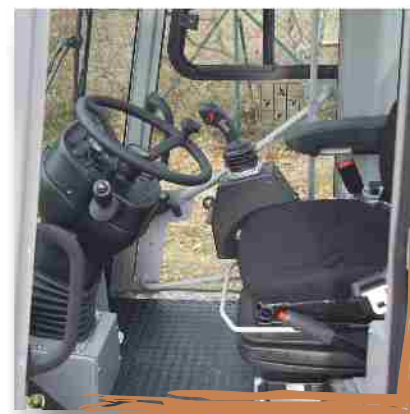
Electro-hydraulic anticipatory control via multifunctional joystick; swivelling function by turning the joystick



Lowering cut-off automatics avoids damage to the tires in swivelled position



- two performance variants
- hydrostatic drive unit



Comfortable cabin with fully adjustable steering column and very good panoramic view



Additional connection for hydraulic attachments, e.g. concrete-mixing bucket or power sweeper



A PAUS standard: hydraulic quick-change device for many attachments



The central bar close to the steps allows easy lubrication of the complete caisson

PAUS - Swivel Loaders SL 655 / SL 755

...the people who care!

Extreme maneuverability in narrow spaces due to articulated steering and loading device swivelling by 180°

Easy operation of the Paus Swivel Loaders via multifunctional joystick incl. operation of the swivelling device by means of logical turning of the joystick; the driver can fully concentrate on his work: this increases the productivity of the machine.

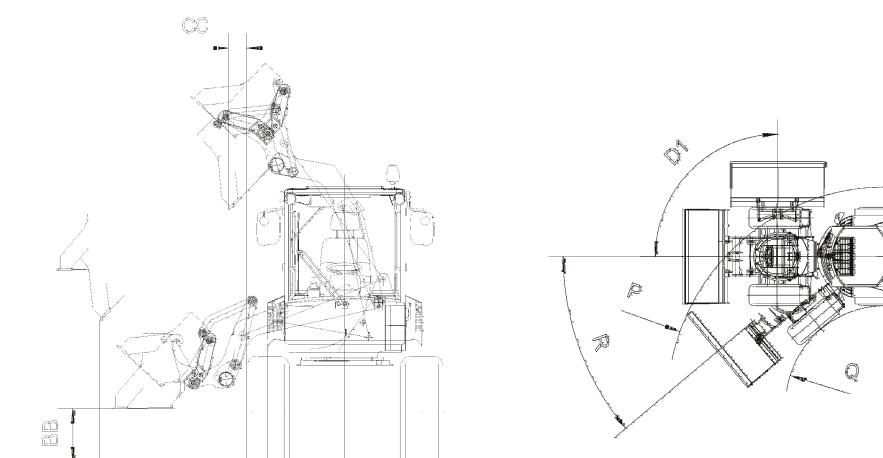
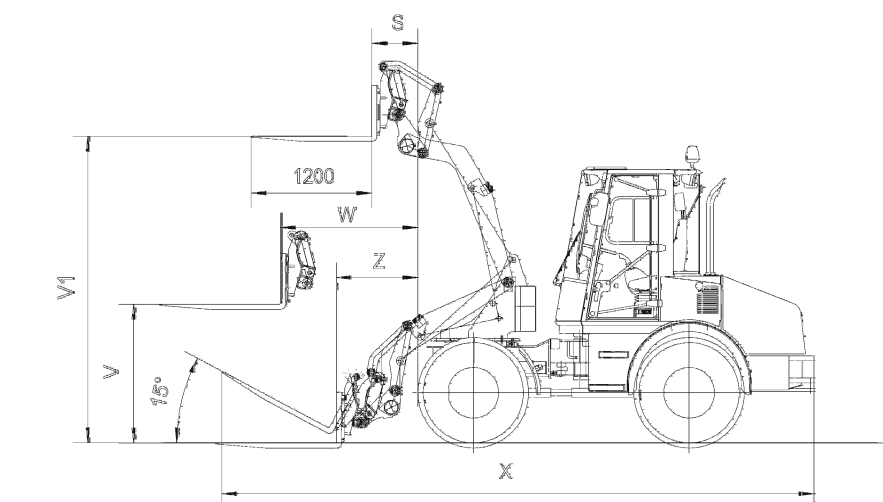
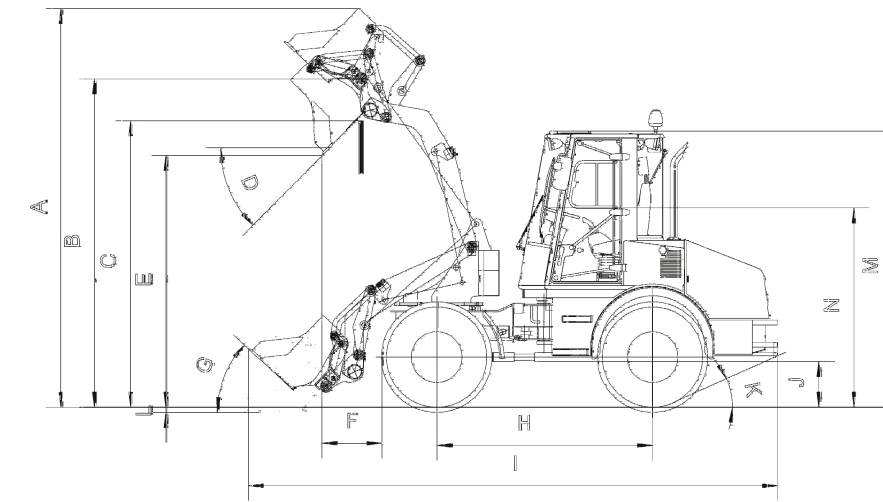
Distinguishing features of Paus Swivel Loaders:

- Articulated joint with pendulum axle, by this, the entire weight of the wheel loader is always at the bucket resulting in a particularly good prospecting mark.
- Automatic locking of pendulum axle provides stability while swivelling.
- The strong parallel kinematics offers great advantages especially when working with the lifting fork.
- Lowering cut-off automatics avoids damage to the tires while swivelling. All attachments as of series -51 are suitable for the series -55.
- Fully developed technology meets all regulations as to noise protection and safety.
- With Paus Swivel Loaders SL 755 and SL 655 you can carry out many works more efficiently compared to usual wheel loaders. By means of the loading system swivelling by 180° you achieve high efficiency being hard to match. The total range of action of the bucket incl. articulated steering is about 260°.
- Series -55 provides a modern design. The cabin offers an excellent panoramic view. Large windows allow an excellent view on bucket, wheels and attachments which has a positive effect on safety.
- Paus offers very good air conditioning of the cabin, heating of the feet compartment, defroster nozzles for front and rear windows via 3-stage blower; and as option: air conditioning plant and comfortable seat with air suspension.

SL 655 / SL 755

A machine for all kinds of application in civil engineering, cable laying works, landscaping and agricultural and municipal work. Especially for narrow construction sites Paus Swivel Loaders are the right decision.

Technical Data



| RL | 655SL | 755SL |
|-----|-------|-------|
| A | 3959 | 3959 |
| B | 3261 | 3261 |
| B1 | | |
| C | 2846 | 2846 |
| C1 | | |
| D | 45° | 45° |
| D1 | 90° | 90° |
| E | 2502 | 2502 |
| E1 | | |
| F | 590 | 590 |
| F1 | | |
| F2 | | |
| F3 | | |
| G | 43,5° | 43,5° |
| H | 2145 | 2145 |
| I | 5256 | 5256 |
| J | 445 | 445 |
| K | 24° | 24° |
| L | 52 | 52 |
| M | 2742 | 2742 |
| N | 1980 | 1980 |
| O | 1850 | 1950 |
| P | R4320 | R4320 |
| Q | R2010 | R1960 |
| R | 40° | 40° |
| S | 458 | 458 |
| S1 | | |
| T | | |
| U | | |
| V | 1377 | 1377 |
| V1 | 3048 | 3048 |
| V2 | | |
| W | 1367 | 1367 |
| W1 | | |
| X | 5884 | 5884 |
| Y | | |
| Z | 810 | 810 |
| AA | 1507 | 1454 |
| AA1 | | |
| BB | 528 | 534 |
| CC | 229 | 175 |
| CC1 | | |

| Operating Data | SL 755 | SL 655 |
|--|--------------------|--------------------|
| Bucket capacity | 1,0 m ³ | 0,8 m ³ |
| Width of bucket | 1950 mm | 1850 mm |
| Width of loader | 1900 mm | 1800 mm |
| Breaking force | 56 KN | 56 KN |
| Tipping load, articulated | 3350 Kg | 3350 Kg |
| Lifting force on the ground | 46 KN | 46 KN |
| Operating weight | 6250 Kg | 5950 Kg |
| <i>Data with lifting fork</i> payload acc. to EN 474-3 | | |
| Payload 80 %, transport position/articulated | 2600/ 2380 Kg | 2600/ 2380 Kg |
| Payload 60 %, transport position/articulated | 2360/ 2100 Kg | 2360/ 2100 Kg |

All specifications without engagement. Our machines correspond to the latest European Safety Directives. We reserve the right to effect changes in design!