

Technical Data



Engine	TSL 855 TL 855
Make	DEutz
Type	BF4L 2011
Performance	50 kW (68hp) at 2,300 rpm.
Cylinders / stroke volume	4 in line/ 3.108 ltrs.
Cooling system	oil / air

Waste gas values acc. to 97/68/EC; stage II.
Dry air filter with safety cartridge and pollution indicator.



Drive Unit
power-controlled hydrostatic drive unit with maximum-load control, i.e. automatic adaptation of traction power and speed; creep speed gearshift via rotary potentiometer steadily adjustable 0 - 20 km/h travelling speed can be reduced at full engine revolutions via an inch/brake pedal, giving at the same time more power to the working hydraulics
operating ranges shiftable under load
Front axle: planetary rigid axle with multiple-disc self-locking differential, rigidly mounted planetary rigid axle with reduction gear, swingingly suspended with multiple-disc self-locking differential and multiple-disc brake, rear axle oscillation +/- 12°
0 - 7 km/h
max. traction power / limited speed
Rear axle: planetary rigid axle with reduction gear, swingingly suspended with multiple-disc self-locking differential and multiple-disc brake, rear axle oscillation +/- 12°
0 - 7 km/h
max. traction power / limited speed
Road operation: 0 - 20 km/h
max. traction power / limited speed
Option: 0 - 25 km/h high-speed version as another option 0-38 km/h



Brakes
Service Brake
hydraulic foot-operated brake actuating two oil-immersed multiple-disc brakes effective on all 4 wheels via the all-wheel drive hydrostatic drive unit acting as wear-resistant auxiliary service brake
Parking Brake
mechanical operation of multiple-disc brake



Tires
Front and rear 405/70 R 20 MPT 01
Option 405/70 R 20 EM 01
Special tires on request.



Steering
Articulated steering, fully hydraulic via priority valve, quick and easy steering even at idling speed.
Total steering angle 80°.
In case of non-running engine, emergency steering characteristics of the wheel loader are provided.



Hydraulic System
Working / Steering hydraulic, pump discharge max. 76 l/min.
Working pressure, loading / steering hydraulics 200 bar/ 180 bar
Lifting, tipping and swivelling* cylinder double acting.
Control unit with electro-hydraulic anticipatory control proportionally load-independent.
Control block with 4/5* operating circuits.
Single-lever cross-type control for lifting / tipping / swivelling* and telescopic cylinder and additional control circuit for quick-change device and attachments.



Loading System
Hydraulic quick-change device as standard.
Sealed bearings with prolonged lubrication intervals.
Telescopic loading system with parallel kinematics.
Swivelling device 180° (2 x 90°) steadily swivelling.



Filling Capacities
Diesel fuel 80 l
Hydraulic system 65 l



Dimensions and Weights
TSL 855 acc. to drawing TL 855 acc. to drawing
Operating weight 6,900 kg Operating weight 6,200 kg



Electrical Equipment
Generator, three-phase current 14 V/ 60 A
Starter 2.2 kW/ 12 V
Battery 12 V/ 88 Ah
Battery voltage 12 V
Lighting acc. to StVZO (German Motor Vehicle Construction and Use Regulations) with halogen headlights.



Noise Emission Level
Guaranteed noise level: acc. to directive 2000/14/EC.

Cabin

Standard Equipment
large, elastically supported cabin (ROPS-FOPS) granting all-round view, with plane entrance on both sides;
parallel windshield wiper in front and rear with "parking position" and windshield washer, interval mechanism for wiper in front;
tinted safety glazing, rounded panoramic front and rear window, sliding window on the right; fully adjustable, ergonomic comfortable driver's seat with disc support, safety belt;
steering wheel and instruments console adjustable as to inclination and height; adjustable engine oil heating with defrosting nozzles for front and rear window, 3-stage ventilator for fresh air and circulating air;
service hour meter, fuel indicator and all other necessary operating, controlling and indicating instruments clearly arranged on the instrument board; 12 V plug socket; commutator switch, switch for additional control circuit, pushbutton for extending and retracting and pushbutton for parallel guidance cylinders integrated in the joystick, swivelling device 180° sensitively controlled via joystick, joystick moving together with the seat; 1-key system, interior lamp, sun shield, inside mirror, battery main switch; folding outside mirror on both sides, 2 working headlights in front of the cabin

Special Equipment

Options:
heated outside mirrors electrically adjustable;
working headlight in the back of the cabin;
panoramic lamp; acoustic reversing signal;
radio, air conditioning plant, anti-theft device;
comfortable driver's seat with pneumatic cushioning;
central lubrication system, pre-filter for coarse-grained dust, safety device against pipe breakage;
pressureless return pipe in front, additional control circuit for attachments;
shock absorption system for loading system;
first filling with biological oil, protective paint against aggressive agents;
soot filter system, spare wheel, catalyzer;
universal shovel, lifting fork, load hook, power sweeper, snowplow, etc.

*only for TSL 855
Other options on request

Powerful – flexible ranges of use



Hermann Paus Maschinenfabrik GmbH
Siemensstraße 1-9 · 48488 Emsbüren
Telefon: (0 59 03) 7 07 - 0
Telefax: (0 59 03) 7 07 - 33
info@paus.de
www.paus.de

your distributor:

538589/03



Telescopic Wheel Loader
Telescopic Swivel Loader
TL 855 + TSL 855
Multifunctional and efficient!

TL 855 + TSL 855



High payload, great range of action and enormous stability - even in heavy operation



Many attachments make the TL 855 and the TSL 855 an universal machine



Extremely good accessibility for inspection and maintenance works due to the GFK engine cover that can be opened widely



Plain entrance on both sides, control device foldable to the back, ergonomically designed joystick, orthopaedic comfortable seat with safety belt and disc support



Electro-hydraulic anticipatory control via multifunctional joystick: For TSL 855: swivelling function by turning the joystick

- two variants
- hydrostatic drive unit
- comfortable cabin

TSL 855: swivelling instead of steering



Comfortable cabin with fully adjustable steering column and very good panoramic view



Additional connection for hydraulic attachments, e.g. concrete-mixing bucket or power sweeper



A PAUS standard: hydraulic quick-change device for many attachments



The central bar close to the steps allows easy lubrication of the complete chassis

PAUS - TL 855 & TSL 855

Telescopic Wheel Loaders that are convincing! Safe and easy operation, and optimum height – this is the combination you get with the telescopic wheel loaders TL 855 + TSL 855. In 1996 PAUS built the first telescopic wheel loader worldwide. You will find all this experience – combined with the latest technical know-how - in an efficient and excellently developed machine that will convince you in operation.

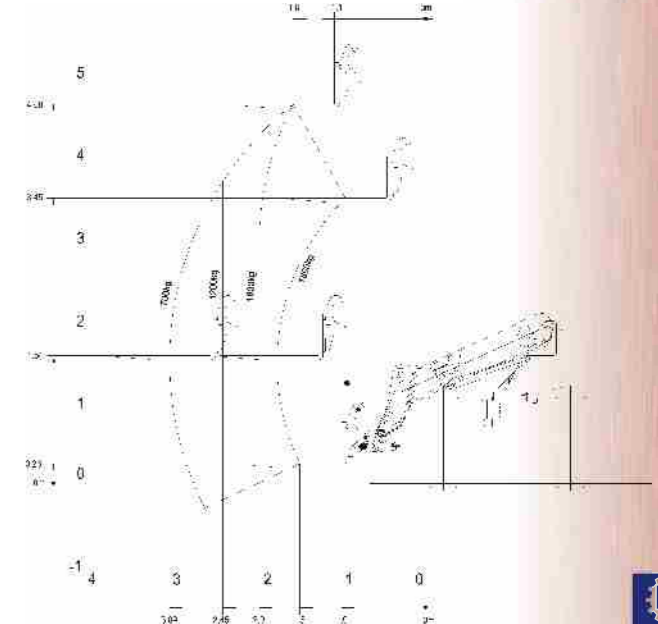
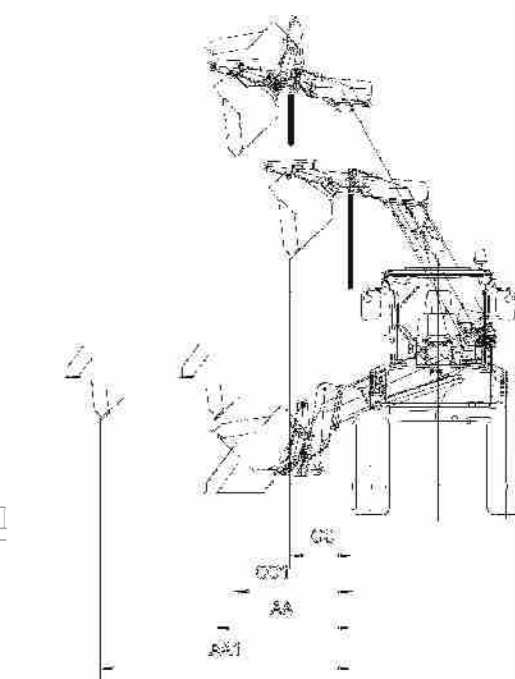
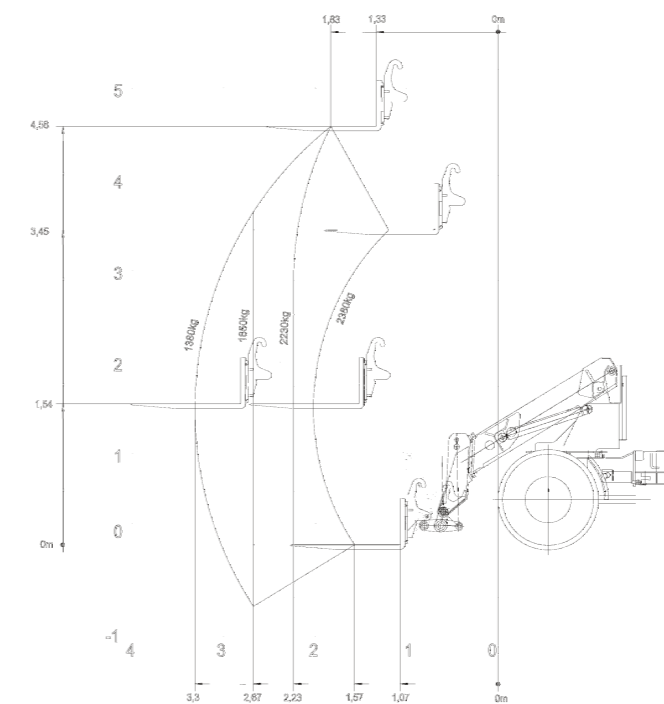
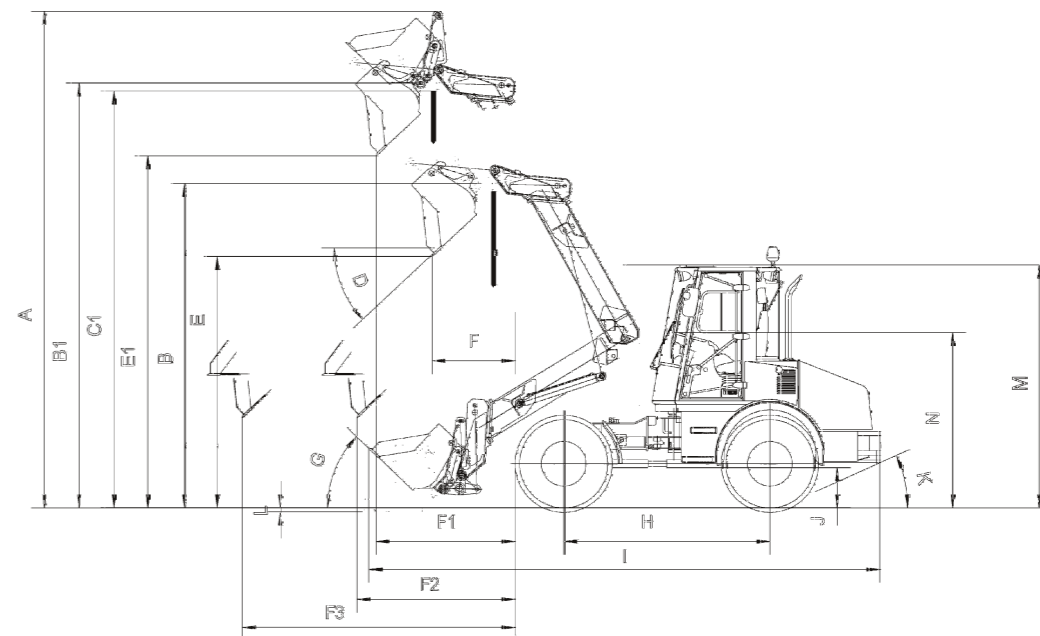
Distinguishing features of Paus Telescopic Wheel Loaders:

- Fully developed technology meets all regulations as to noise protection and safety.
- With Paus Telescopic Wheel Loader TL 855 and Telescopic Swivel Loader TSL 855 you can carry out many works more efficiently compared to usual wheel loaders. By means of the loading system swivelling by 180° you achieve high efficiency being hard to match. The total range of action of the bucket incl. articulated steering and swivelling device is about 260°.
- Warning device against overloading and automatic pendulum axle lock* provide optimum stability.
- The strong parallel kinematics offers great advantages especially when working with lifting fork or working basket.
- Series -55 provides a modern design. The cabin offers an excellent panoramic view. Large windows allow an excellent view on bucket, wheels and attachments. The window in the roof of the cabin allows a good view on the loads lifted. All that has a very positive effect on safety.
- Paus offers very good air conditioning of the cabin, heating of the feet compartment, defroster nozzles for front and rear windows via 3-stage blower; and as option: air conditioning plant and comfortable seat with air suspension.

TL 855 / TSL 855

A machine for all kinds of application in road building, structural and civil engineering, cable laying works, landscaping and agricultural and municipal work. Whenever great lifting height, dumping height and range of action is demanded, the Paus Telescopic Wheel Loader is the first choice.

*only for TSL 855



Operating Data	TSL 855	TL 855
Bucket capacity	1.0 m³	1.0 m³
Width of bucket	2000 mm	2000 mm
Width of loader	1900 mm	1900 mm
Tipping load, articulated	3800 Kg	3800 Kg
Turning radius interior / exterior	2190mm/ 4730mm	2190mm/ 4710mm
over bucket		
Payload with lifting fork	payload acc. to EN 474-3	
Payload 80%	2380 / 2210 Kg	2380 / 2210 Kg
Transport position/articulated		
Payload 60%	2100 / 1950 Kg	2100 / 1950 Kg
Transport position/articulated		
Operating weight	6900 Kg	6200 Kg

All specifications without engagement. Our machines correspond to the latest European Safety Directives. We reserve the right to effect changes in design!

RL	855TL	855TSL
A	5612	5606
B	3666	3661
B1	4802	4797
C	3576	3571
C1	4712	4707
D	43°	43°
D1		90°
E	2843	2838
E1	3980	3974
F	877	935
F1	1510	1568
F2	1728	1786
F3	3024	3079
G	44°	44°
H	2330	2330
I	5720	5775
J	445	445
K	24°	24°
L	40	44
M	2742	2742
N	1980	1980
O	1950	1950
P	R4710	R4730
Q	R2190	R2190
R	40°	40°
S	642	697
S1	1275	1330
T		
U		
V	1552	1548
V1	3455	3452
V2	4590	4587
W	1465	1519
W1	2760	2816
X	6265	6320
Y		
Z	1015	1070
AA		1553
AA1		2850
BB		
CC		703
CC1		1335